

## Product Parts

- 1 - Retractor
- 2 - 2pc. Telescoping Pole
- 3 - Banner Rail
- 4 - Bottom Strip



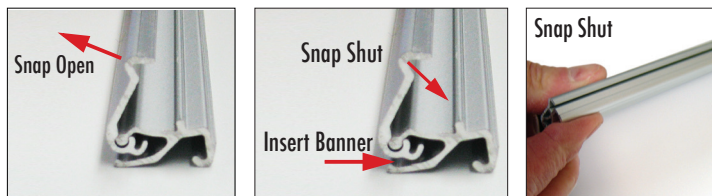
\*Bottom Strip will be attached to the graphic if ordering a Kit or Graphic Only.



## Banner Install

### Step 1

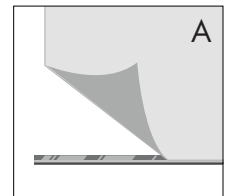
Remove all of the product parts from the bag and place, along with the banner, on a clean flat surface. Remove End Caps from the Banner Rail (3) and snap the Banner Rail open. Fully insert the top edge of the Banner into the groove of the Banner Rail (3) and snap it shut. Replace End Caps.



### Step 2

**If Bottom Strip (4) is already attached, proceed to Step 3.**

Lay the banner flat, printed side up. On the Bottom Strip (4) remove the strip of protective paper to expose the adhesive (A).

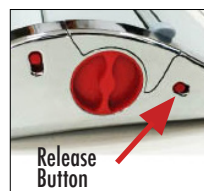


Center the bottom of the banner on the bottom strip and press firmly and evenly onto the adhesive, and be sure to smooth out any bubbles or wrinkles (B).

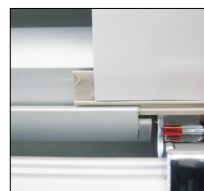


### Step 3

Open up the retractor using the door release buttons on both sides of the retractor as shown.



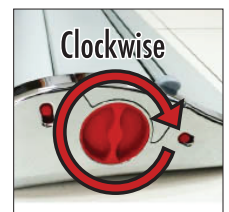
With the front of the retractor and the Banner facing you, slide the Bottom Strip (4) into the groove on the retractor as shown.



### Step 4

Increase the tension of the spring of the retractor by turning the retractor tension knob clockwise until the banner is fully inside the retractor.

**\*\* DO NOT OVER TIGHTEN \*\***

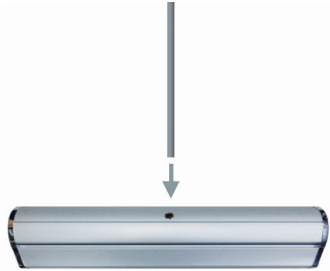


**Display Set-Up Next Page...**

## Display Set-Up

### Step 1

Insert the assembled Telescoping pole (2) into the retractor as shown.



### Step 2

Lift the Banner Rail (3) upwards to expose the banner and connect it to the Telescoping Pole's (2) connector hook by inserting the hook into the Banner Rail's (3) groove.

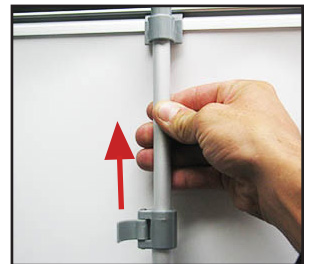


### Step 3

Open the telescoping adjustment clamp to raise the graphic to its full height.

### Step 4

While holding the bottom section of the Telescoping Pole (2), extend the upper section upwards to your desired height.



***Do not exceed 77.75" high.***

### Step 5

Lock telescoping height into place by closing the adjustment clamp shut.



## Storage

Place all product parts into Carry Case and store in a cool dry location.



## Care

Spot clean with damp cloth.

*Warranty Information: All products are designed to provide the user with a cost-effective and durable product. Standard warranty is a 'one year parts and labor' warranty which warrants product against defects in material and workmanship. It does not cover damage due to accidents, abuse, or normal wear and tear. Products found to be defective will be replaced or repaired at factory's discretion.*