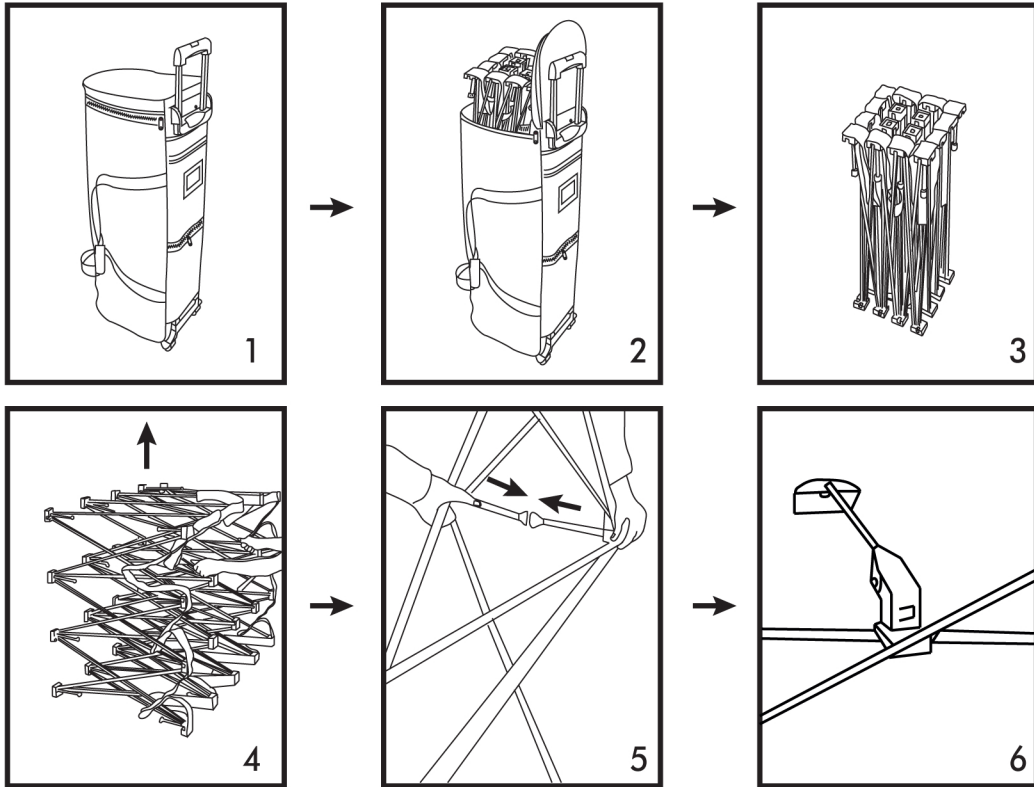
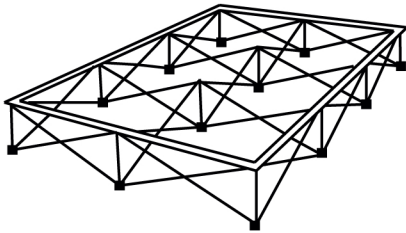


tenso

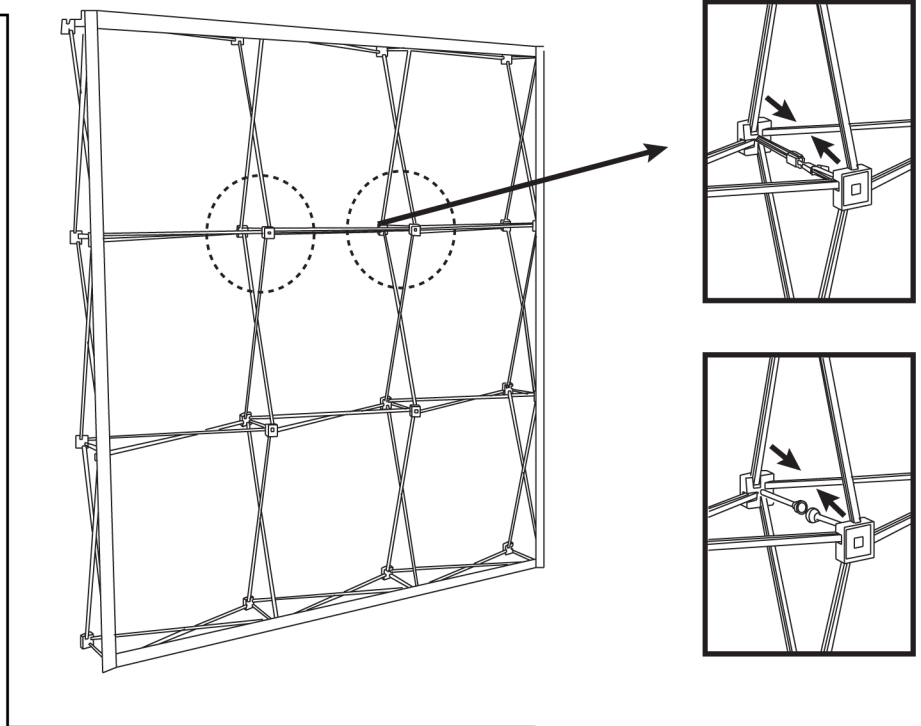
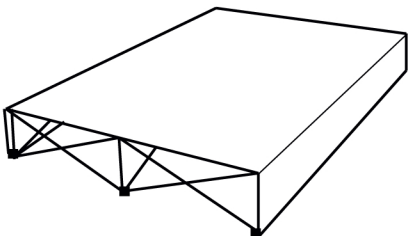
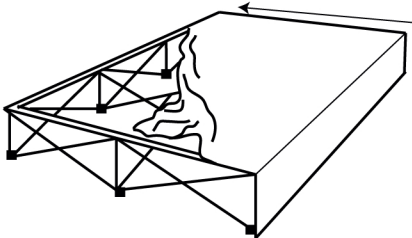
pop up system



ATTACHING GRAPHIC TO THE FRAME



1. Place frame on the floor on its back.



2. Starting at one top corner, secure the graphic onto the frame by attaching the Velcro on the back of the graphic to the top Velcro strip on the frame. Repeat on the bottom edge, working in the same direction. Finally secure the side panels to the Velcro on the frame.