

# UltraFit Table Throw 6' and 8'

114001, 114004, 114002, 114005

## Product Specifications

	Front Panel Viewable Graphic Size	Full Bleed Viewable Graphic Size	
6' UltraFit	50" x 17"	130" x 88"	
8' UltraFit	50" x 17"	154" x 88"	

Graphic Templates Available

## Product Parts

1 - Table Throw



## Display Set-Up

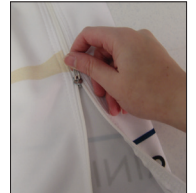
### Step 1

Remove the Table Throw (1) from the bag and place on a table with the zippered side to the back.



### Step 2

Unzip the zipper to allow for the throw to stretch over the sides. Start with one small end of the table, matching the sewn edges to the edges of the table.



### Step 3

Insert the feet of the table into the pockets located on the bottom inside corners of the throw.



### Step 4

Carefully zip the throw closed.



## Storage

### Step 1

Match up the two top horizontal seams (with the imprint facing up and out).



### Step 2

The table throw should look like a rectangle.



### Step 3

Roll the table throw onto the packing tube (that it shipped with).



### Step 4

Place table throw into a Carry Case (sold separately) and store in a cool, dry location.

## Care

Recommended for indoor use only.

Machine wash on gentle cycle using mild detergent. Tumble dry low-heat setting only. Do not dry clean. Do not iron.

*Warranty Information: All products are designed to provide the user with a cost-effective and durable product. Standard warranty is a 'one year parts and labor' warranty which warrants product against defects in material and workmanship. It does not cover damage due to accidents, abuse, or normal wear and tear. Products found to be defective will be replaced or repaired at factory's discretion.*