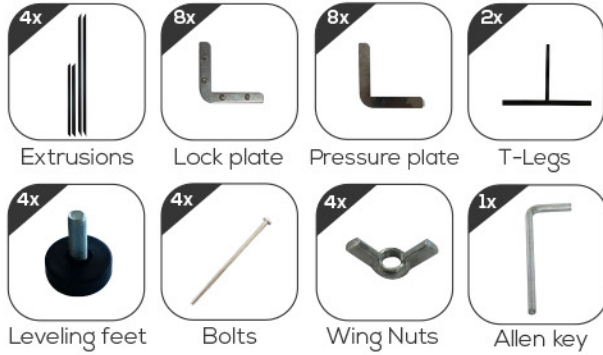


PARTS GUIDE

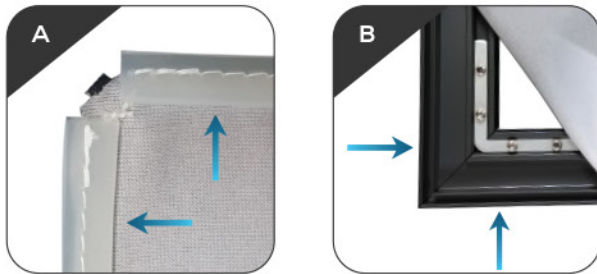
Please remove all parts from the package and review them.
Contact your service representative if there are any missing parts.



GRAPHIC MOUNTING GUIDE

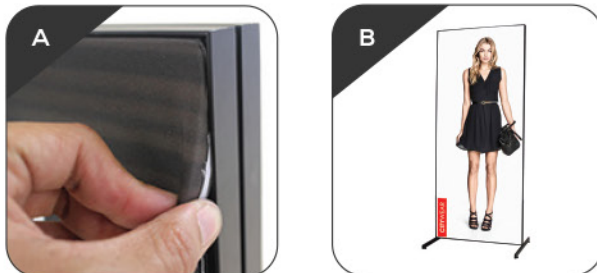
Step 1

- Locate the silicone edge beading on the back of the graphic, which is sewn to the back perimeter.
- In each corner, insert the silicone edge beading into the groove.



Step 2

- On each side, insert the remainder of the beading.
- The graphic should appear flush and completely tucked into the frame. Repeat the process on the back side if using a 2nd graphic.



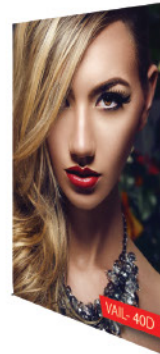
ADDITIONAL RESORT EXTRUSION STYLES



ASPEN
Fabric Frame



ASPEN
Fabric Frame Backwall



VAILS



ASPEN
Onyx



BIG SKY



ALPINE BOOTH

ASPEN T-LEG

SET UP INSTRUCTIONS



INSTALLATION STEPS

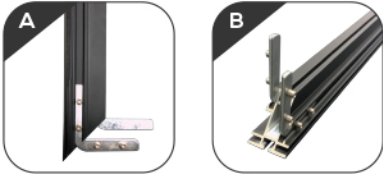
Step 1

Gather all 4 of the extrusions and lay them out on a flat surface. The extrusions will be linked together using the lock and pressure plates.



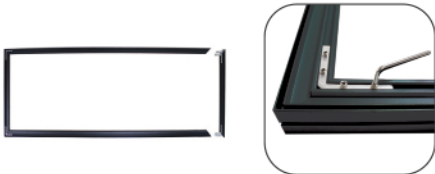
Step 4

Repeat step 3 on the back side of the extrusion. Then repeat the same step on the opposite end.



Step 7

Repeat steps 2-5 for the last remaining extrusion. Tighten all socket screws with the 3mm allen key.



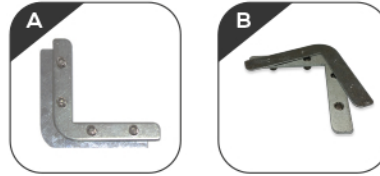
Step 10

Align the insert holes in the T-legs to the pre-drilled holes in the extrusions. Insert the bolts through the T-legs and then the extrusion, respectively.



Step 2

Align the lock plate and pressure plate together. Make sure that the socket screws are recessed enough so the two pieces sit flush together.



Step 5

Slide in both adjacent extrusions. These extrusions should match as a pair in length.



Step 8

The frame is complete and is now ready for both T-legs to be installed.



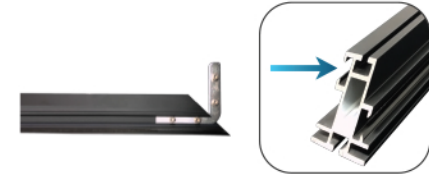
Step 11

Once the bolt is completely inserted, screw on the wing nut and then tighten. Repeat the process until both T-legs are securely attached.



Step 3

Insert the aligned pieces completely into the slot. Insertion begins at either end of the extrusion. DO NOT TIGHTEN the socket screws.



Step 6

Make sure the corners of the extrusions are flush.



(1st FOLD HERE)

Step 9

Locate the (2) pre-drilled holes on the outside of the left and right extrusion.



Step 12

Screw in the leveling feet and then stand the frame up. Your frame is ready to be fitted with the silicone edge graphic.

