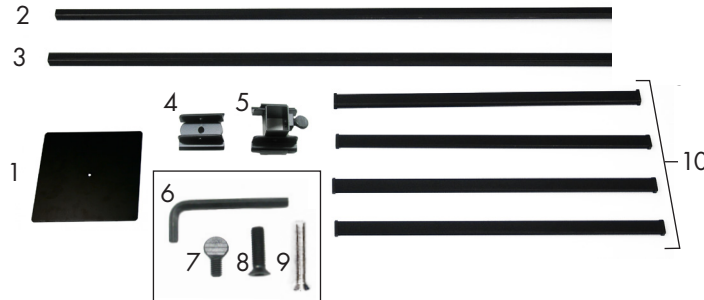


Scan to view Product Instructional Video or visit:
www.creativedisplaysite.com/EverydaySnapRails.html



Product Parts

- 1 - Base Plate
- 2 - Top Pole
- 3 - Base Pole
- 4 - Top Rail Bracket
- 5 - Base Rail Bracket
- 6 - Hex Wrench
- 7 - Thumb Screw
- 8 - Small Black Hex Bolt
- 9 - Silver Hex Bolt
- 10 - Snap Rails (x4)

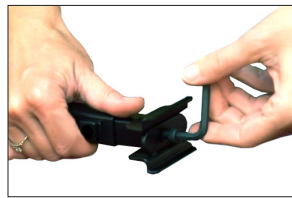


Display Set-Up

Step 1

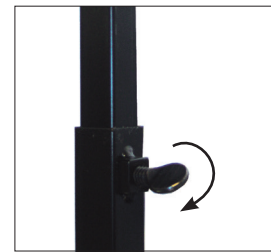
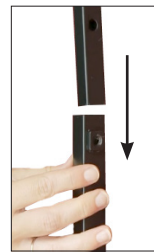
Place the parts on a clean flat surface.

Attach the Top Rail Bracket (4) to the Top Pole (2) by aligning the hole in the Top Rail Bracket (4) with the threaded receptacle of the Top Pole (2). Insert the Small Black Hex Bolt (8) and turn clockwise with the Hex Wrench (6) until fully tightened.



Step 2

Insert the Top Pole (2) into the Base Pole (3) with the threaded end at the top. Insert Thumb Screw (7) and tighten by turning the screw clockwise.



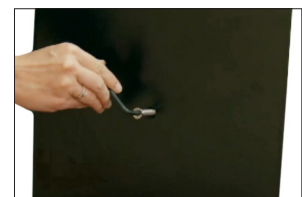
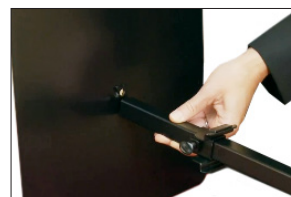
Step 3

Attach Base Rail Bracket (5) by aligning the larger angled face with top of the base pole sliding it over the bottom of the Base Pole (3). Be sure it is the same direction as the Top Rail Bracket (4). Once set, tighten the thumbscrew to hold the bracket in place.



Step 4

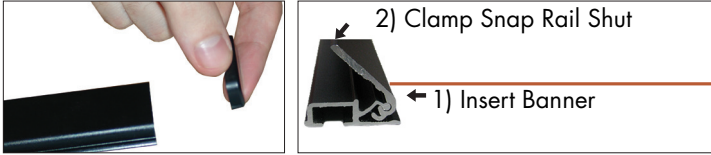
To attach the Base Plate (1), align the raised area of the Base Plate (1) with the bottom of the Base Pole (3). Secure by inserting the Silver Hex Bolt (9) through the bottom of the Base Plate (1) and into the threaded receptacle in the bottom of the Base Pole (3). Tighten with Hex Wrench (6).



Display Set-Up Continued...

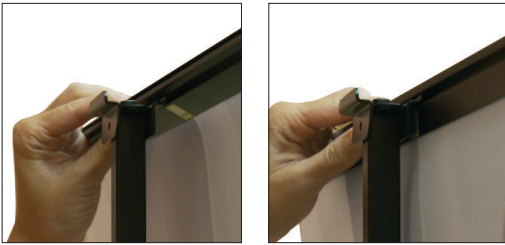
Step 5

To attach the banner to Snap Rails (10), remove the Snap Rail End Caps and open the Snap Rail (10). Slide your banner into the open curved end of the rail until the banner is centered in the rail. Once set, firmly press the Snap Rail (10) closed to secure the edge of the banner and replace the Snap Rail End Caps.



Step 7

Starting with the Snap Rail (10) located on the top of your banner, align the Snap Rail's groove with the Top Rail Bracket (4). Rotate the banner rail back at 45 degree angle and attach the Snap Rail (10) onto the bracket.



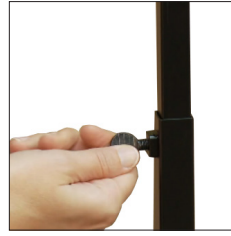
Step 9

With both Snap Rails (10) now attached to the Display, adjust them so the Banner is centered. Adjust the tension of your graphics and tighten the Lower Set Screw on the Base Rail Bracket (5) to secure your adjustment.



Step 6

Extending the Top Pole (2) to the height you want your display to be. Use the Thumb Screw (7) to secure your adjustment.



Step 8

Loosen the Base Rail Bracket (5) and raise it above the bottom of your graphic. Slide the Snap Rail (10) onto the bracket; stopping when the Snap Rail is half-way to center.



Repeat the previous steps 8 & 9 to attach the second graphic to the other side.

Storage

Store in a cool dry location.

Care

To clean, wipe with damp cloth.