

Formulate Tower - 01

TOWER-01

When you are looking for a way to draw attention and captivate your audience at a tradeshow, special event, or in a permanent environment, these Formulate® tension fabric architectural structures are designed to impress. Mix and match the Formulate line of towers to add architecture and drama to any event or interior space. Cylinder, Rectangular and Shield-shaped towers come in 12', 10' and 8' heights and 3' square/diameters at the tops and bottoms.



features and benefits:

- Premium aluminum tube frames with spigot assembly
- Easy to store and ship
- Quick to set up
- One zipper pillowcase fabric graphic
- Kit includes: medium monitor mount, can hold 32-55" monitor/ max weight 40 lbs
- Lifetime limited hardware warranty against manufacturer defects

dimensions:

Hardware	Graphic
<p>Assembled unit: 48" w x 120" h x 26" d 1210mm(w) x 3038mm(h) x 653mm(d)</p> <p>Approximate weight with cases: 119 lbs / 54gs</p>	<p>Refer to related graphic template for more information.</p> <p>Visit: www.exhibitors-handbook.com/graphic-templates</p>
Shipping	
<p>Packing case(s): 1 OCE Case 1 OCH Case</p> <p>Shipping dimensions: OCE: Expandable case length (l) may vary 40"-66" l x 18" w x 18" h 1016mm-1676mm(l) x 457mm(h) x 457mm(d)</p> <p>OCH: 50" l x 29" w x 12" h 1270mm(l) x 737mm(w) x 305mm(h)</p> <p>Approximate total shipping weight (includes cases & graphics): 137 lbs / 62kgs</p>	
	additional information:
	<p>Graphic material: dye-sublimation zipper pillowcase fabric</p>

We are continually improving and modifying our product range and reserve the right to vary the specifications without prior notice. All dimensions and weights quoted are approximate and we accept no responsibility for variance. E&OE. See Graphic Templates for graphic bleed specifications.

Included In Your Kit

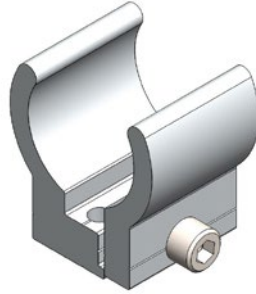
Tools, Components,
& Connectors



ALLEN KEY SET x1



ES30 x15

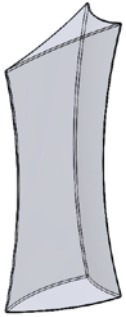


TC-30 x4



MM-M-T x1

Graphics



FMLT-WL15-G x1

Included In Your Kit

Tubes



FMLT-TOWER-01-T1 x1



FMLT-TOWER-01-T2 x1



FMLT-TOWER-01-T3 x1



FMLT-TOWER-01-T4 x1



FMLT-TOWER-01-T5 x2



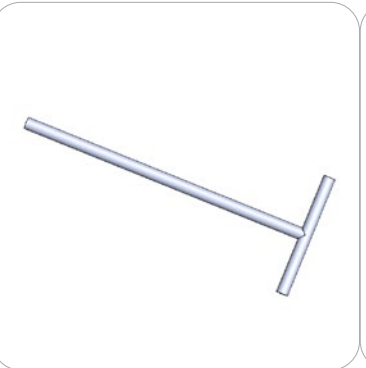
FMLT-TOWER-01-T6 x1



FMLT-TOWER-01-T7 x1



FMLT-TOWER-01-T8 x1



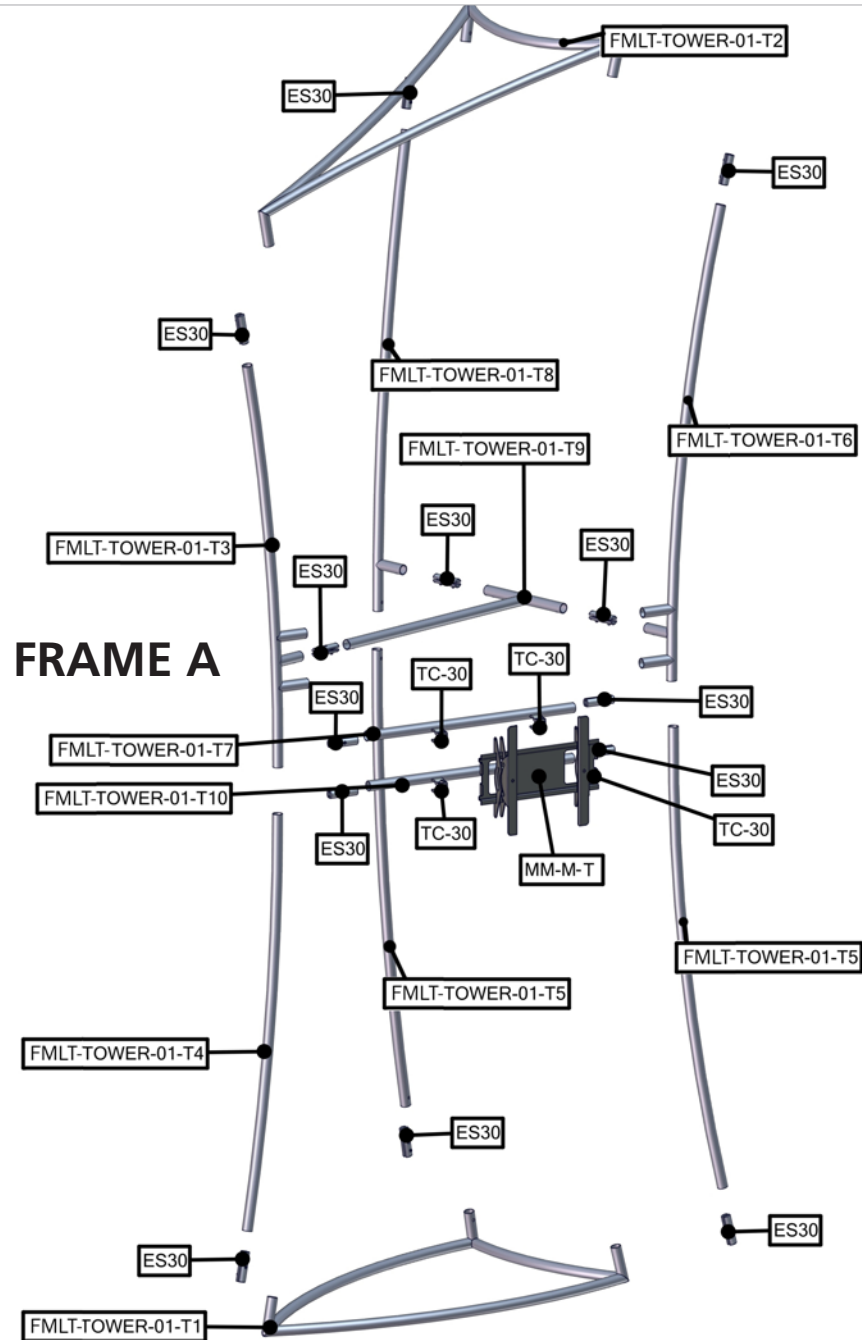
FMLT-TOWER-01-T9 x1



FMLT-TOWER-01-T10 x1

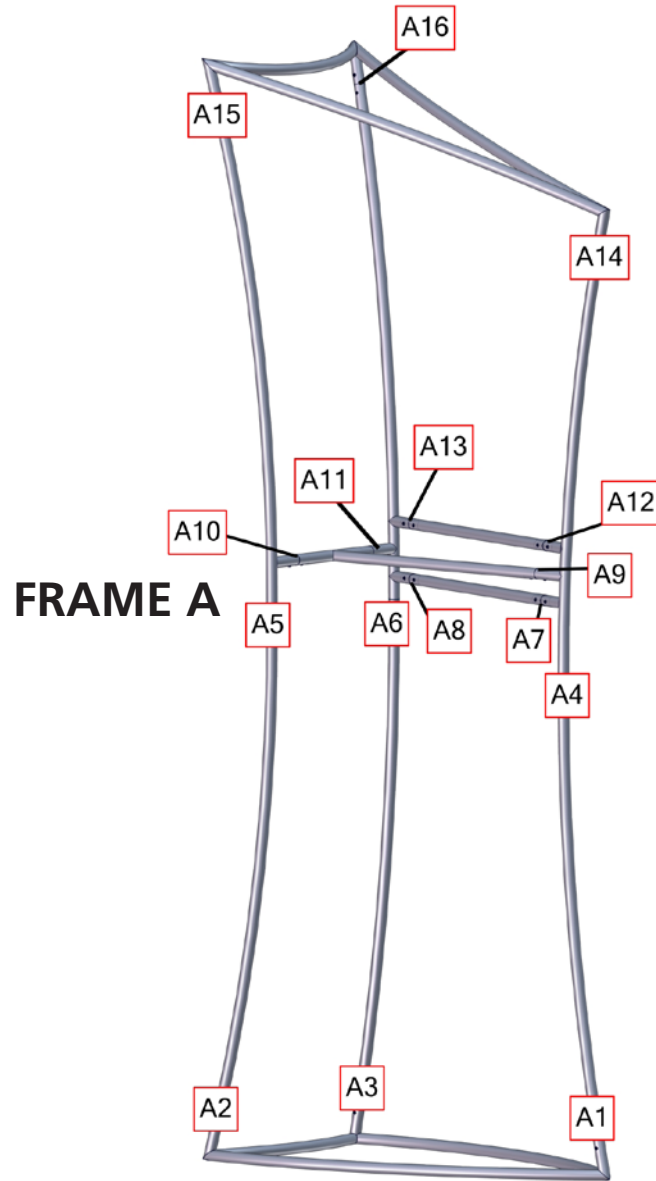
Exploded View

FMLT-TOWER-01



Labeling Diagram

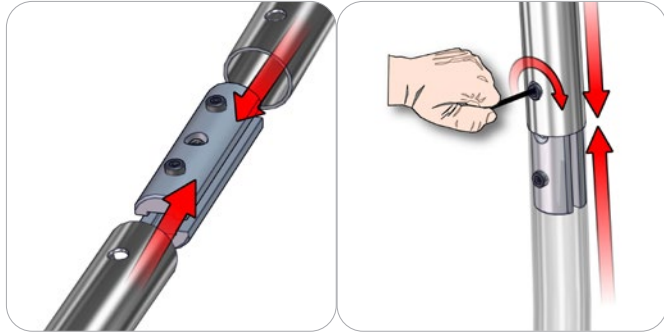
FMLT-TOWER-01



Connection Methods

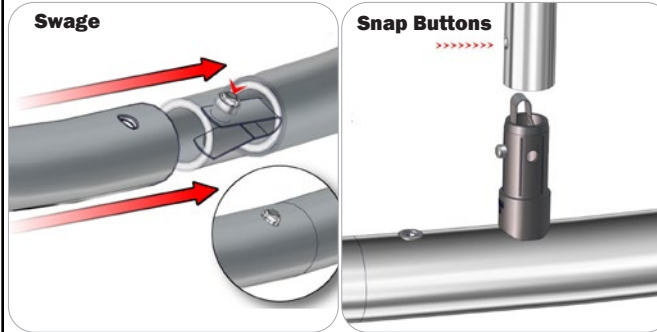
Formulate® structures use a number of different yet simple connection methods. Your kit will include one or more of the connection methods shown below. Steps within the Kit Assembly will reference a specific method for each connection point.

Connection Method 1: ES30 / ES50 / ES75



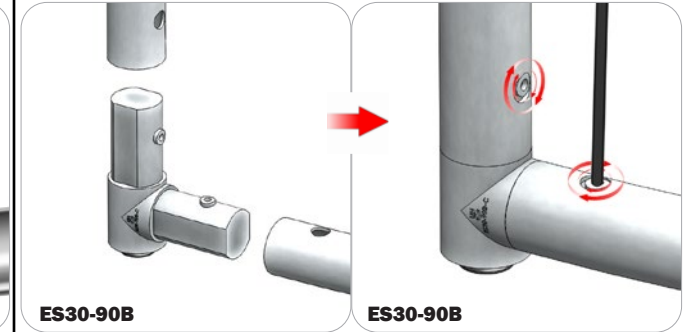
Compress the unlocked connector and slide one tube onto each end. Lock both screws carefully using your allen key tool. Be sure to lock securely, but do not overtighten.

Connection Method 2: Snap Buttons & Swage



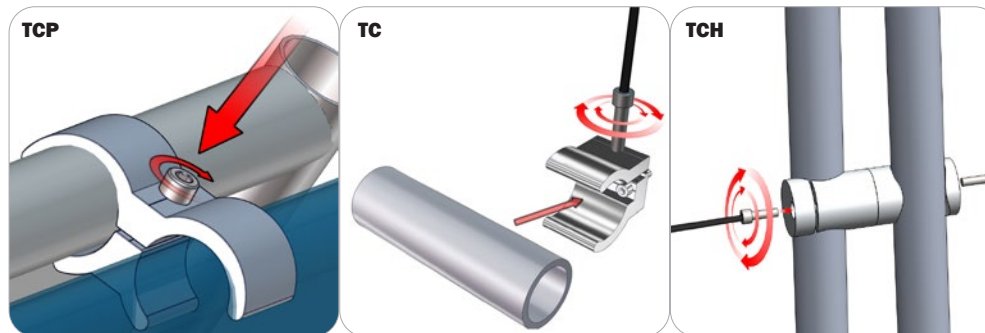
Locate the snap button on the connector or swage tube. Locate the hole on the corresponding tube. Press the snap button with your thumb and slide the tube and connector together so that the snap button snaps fully into the lock hole. To disassemble, press the snap button and pull apart.

Connection Method 3: ES30-90B / ES30-I / ES30-C



Compress one unlocked end of the connector and slide it through one tube end. Compress the other end of the connector and slide the second tube on. Lock both screws carefully using your allen key tool. Be sure to lock securely, but do not overtighten.

Connection Method 4: Tube Clamps



Be sure to fully assemble all frames before using clamps. With the clamp unlocked, place one tube of the first frame into the mouth of the clamp. Place the second tube (if applicable) into the second mouth of the clamp. With both frame's tubes in the clamp, be sure to lock securely, but do not overtighten.

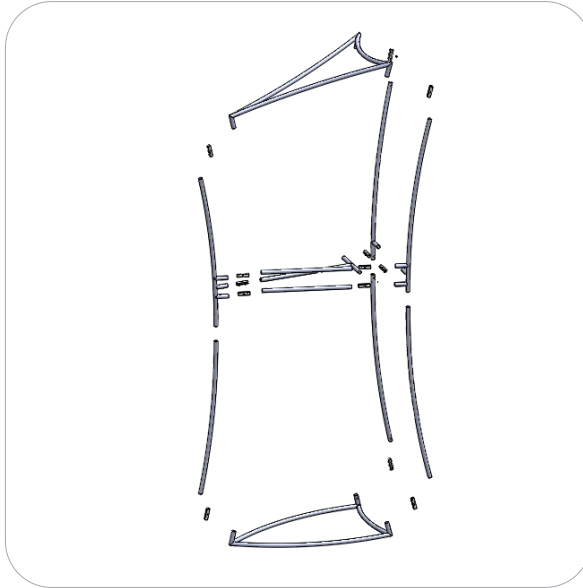
Kit Assembly

Step by Step

Step 1.

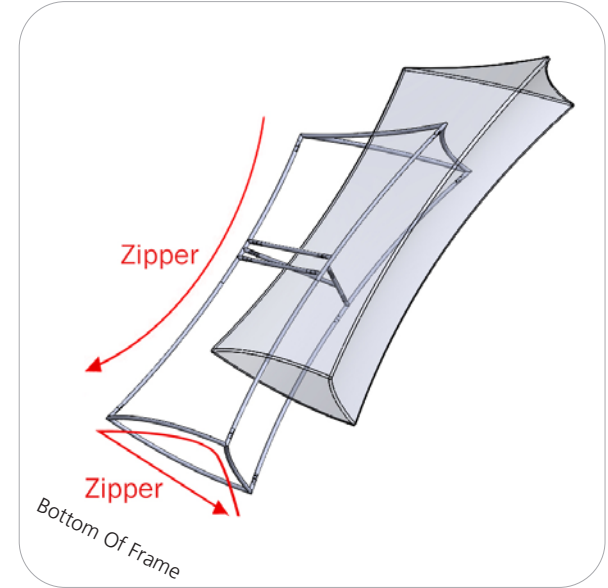
Gather the components necessary for assembling Frame A. Assemble your frame in order according to the Labeling Diagram.

Please reference Connection Methods 1 & 2 for more details.



Step 2.

With the pillowcase unzipped, encase Frame A by pulling the cover over the top. Zippers are located along one side of the frame and along the bottom.



Step 3.

Locate your MM-M-T monitor bracket. Attach the TC-30 tube clamps to the back of the bracket if not already assembled. Clip the four clamps to the cross members of the tube frame (through the holes of the graphic) and lock into place.

Please reference Connection Method 4 for more details.

